

Selected
works of

Lidija Filipovska

“Architecture is the interaction between man, place and time. The shaping of this interaction is what fascinates me.”

WORKS

06-14



Guangdong Patent Examination Cooperation Centre, Guangzhou (HSArchitects)

1st prize

Government Building

December 2012 / April 2013

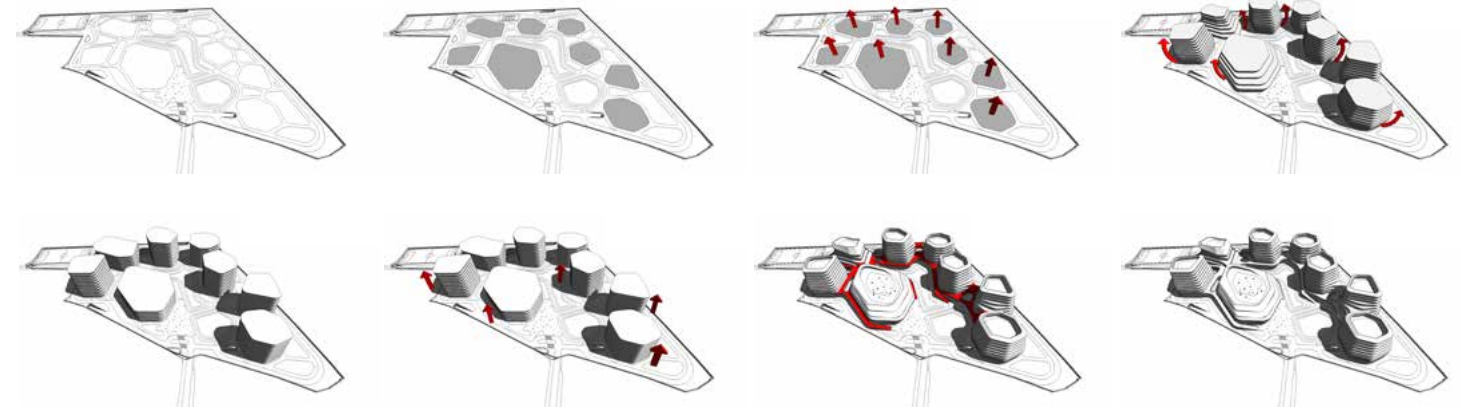
Phase 1 completed, Phase 2 in progress

Role: Co-design/Form Design & Research/Layout Design & Development/Sustainability Analyst (direct supervisor: Abdelkader Saadi)

The site is located in the area surrounded by numerous hills and rivers. This strong character drove the design process towards forming the idea.

In the concept, the graphic topology projected on site was inspired by the surrounding nature. The idea was to recreate hill-like buildings, as they've been carved into initial landscape. The balance is achieved between existing conditions and future development.

Those hills-shaped forms co-exist with its natural surrounding, syncing them into undivided, yet mutually respectful unity.



Mass Study



Elevation

Guangdong Patent Examination Cooperation Centre, Guangzhou (HSArchitects)

1st prize

Government Building

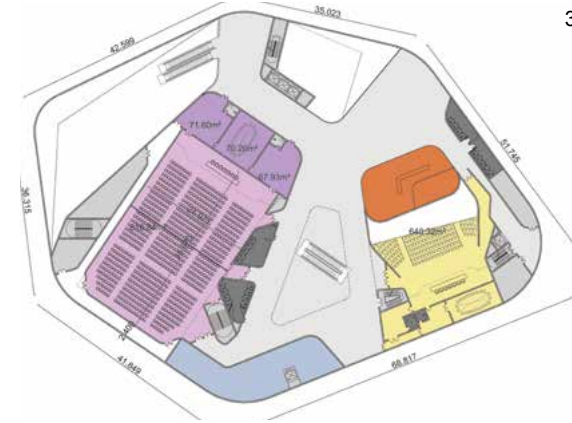
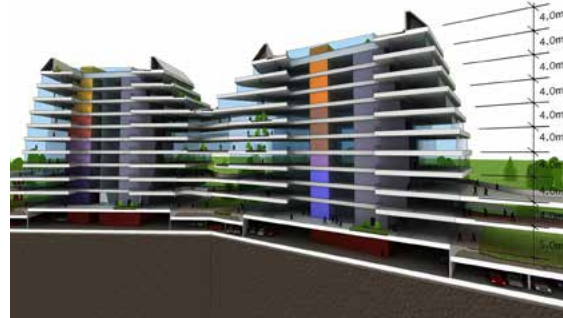
December 2012 / April 2013

Phase 1 completed, Phase 2 in progress

Role: Co-design/Form Design & Research/Layout Design & Development/Sustainability Analyst (direct supervisor: Abdelkader Saadi)



7F



3F



GF



2F



Offices

Conference Center

Guangdong Patent Examination Cooperation Centre, Guangzhou (HSArchitects)

1st prize

Government Building

December 2012 / April 2013

Phase 1 completed, Phase 2 in progress

Role: Co-design/Form Design & Research/Layout Design & Development/Sustainability Analyst (direct supervisor: Abdelkader Saadi)

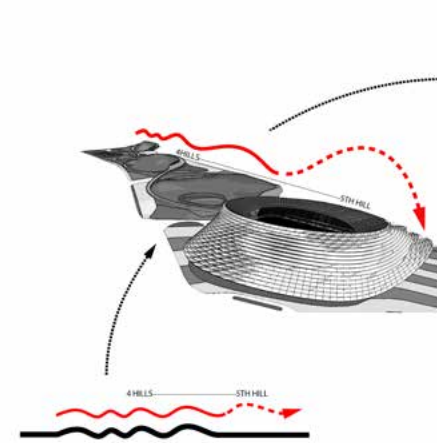
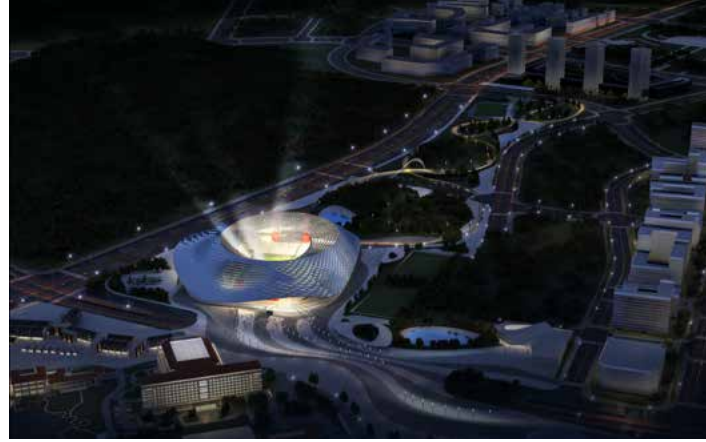


Zengcheng Stadium, Zengcheng (Coop Himmelb(l)au & HSArchitects)
2nd prize
Sport Center
January 2013
Role: Co-design/Layout Design & Development/Presentation Design (direct supervisor: Zeng Yee)

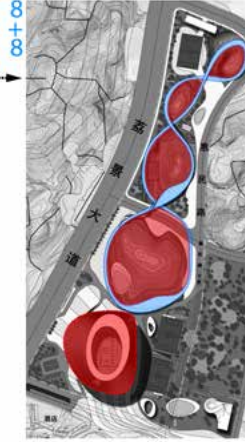
The new “5 hills sports park” will be an attractive recreation / culture / sport park in the new area of Zengcheng.

The project consist of 4 hills that are part of the existing landscape, with a double 8 training track over them and the stadium, a visual “5th” hill. The Stadium acts as a functional and visual Attractor Point for all activities around the site and becomes a part of the daily life.

The urban design acts as a strong impulse and creates a dynamic spatial relationship in between the existing infrastructure and the future city extension.



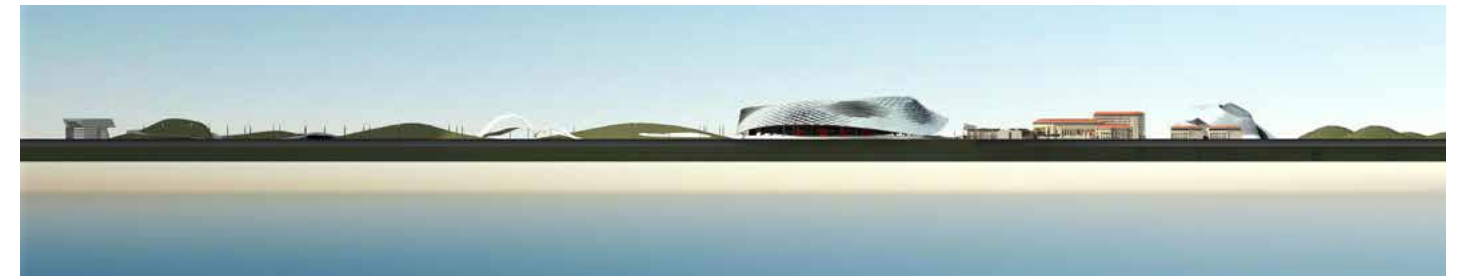
Concept Sketch



Masterplan

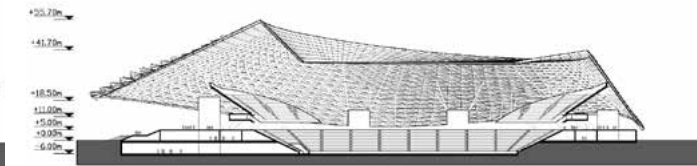
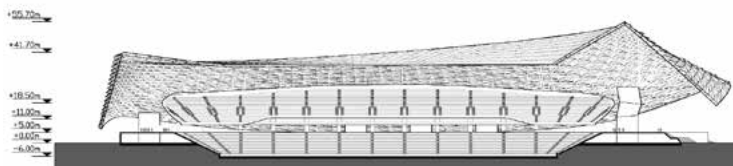
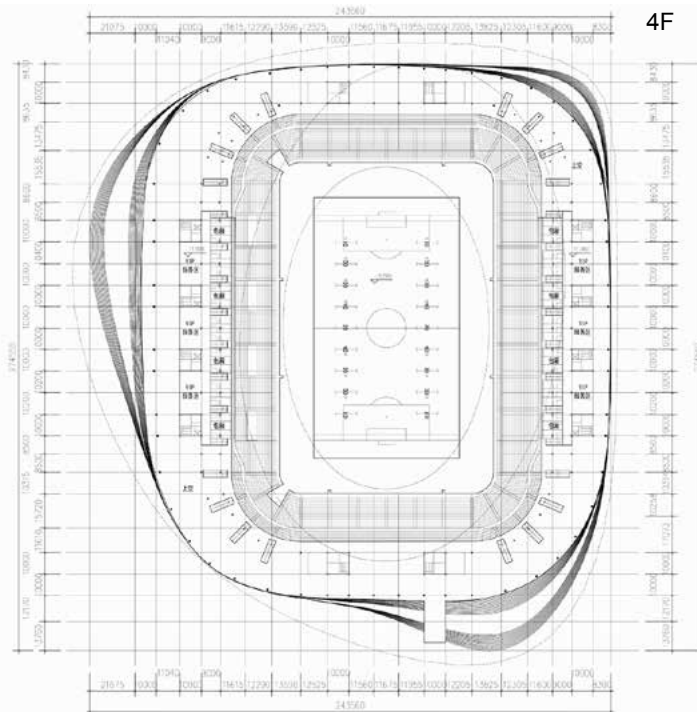
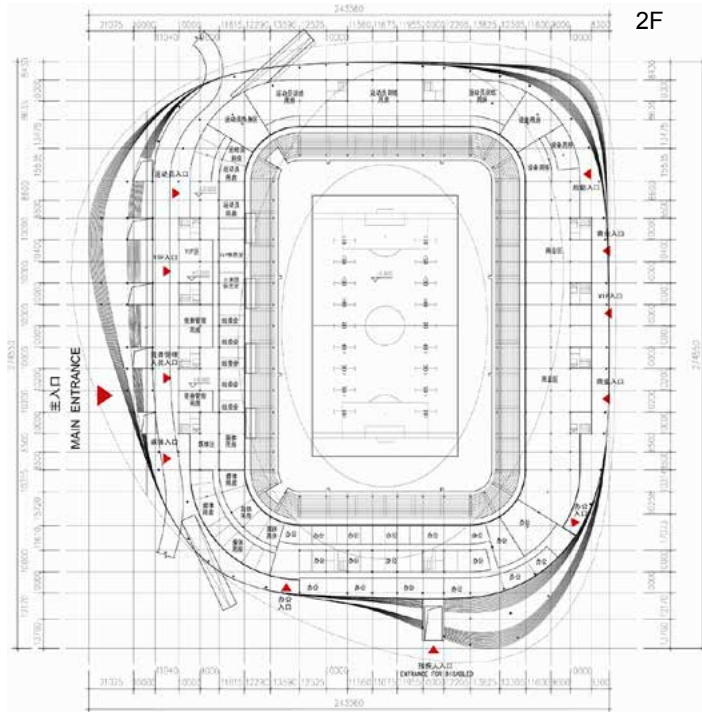


Function Layout

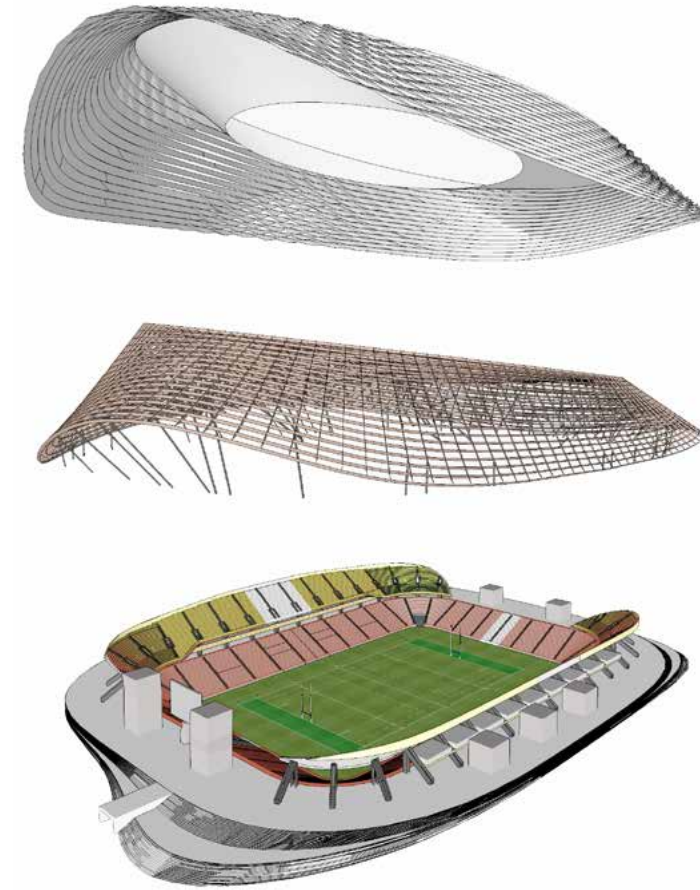


Site Elevations

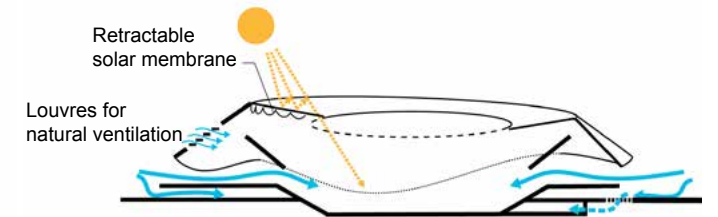
Zengcheng Stadium, Zengcheng (Coop Himmelb(l)au & HSArchitects)
2nd prize
 Sport Center
 January 2013
 Role: Co-design/Layout Design & Development/Presentation Design (direct supervisor: Zeng Yee)



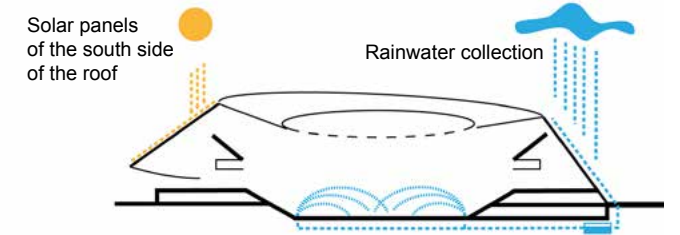
Zengcheng Stadium, Zengcheng (Coop Himmelb(l)au & HSArchitects)
2nd prize
 Sport Center
 January 2013
 Role: Co-design/Layout Design & Development/Presentation Design (direct supervisor: Zeng Yee)



Ventilation & Shading Diagram



Sun Energy & Rain Collection



Energy Conservation/Sustainability Design/ Shading Analysis



Longjiang Mixed-Use Development, Foshan (HSArchitects)

1st prize

Shopping Mall & Residential Towers

May 2013

Currently under construction

Role: Co-Design/Form Design & Research/Layout Design/Sustainability Analyst/3D Modeler (direct supervisor: Abdelkader Saadi)

Located in a newly-established Long Jiang City Centre, this site is planned to be an important retail area of the district. In accordance with Feng Shui, the concept was founded on the grounds of Wu Xing, also known as the Five Elements.

The shopping mall consists of four individual building segments, each representing one of the elements (wood, earth, metal, water) and central square as a fifth element (fire). Symbolically, central square is the heart of the development.



Site Study



Masterplan



Mountain Views

Longjiang Mixed-Use Development, Foshan (HSArchitects)

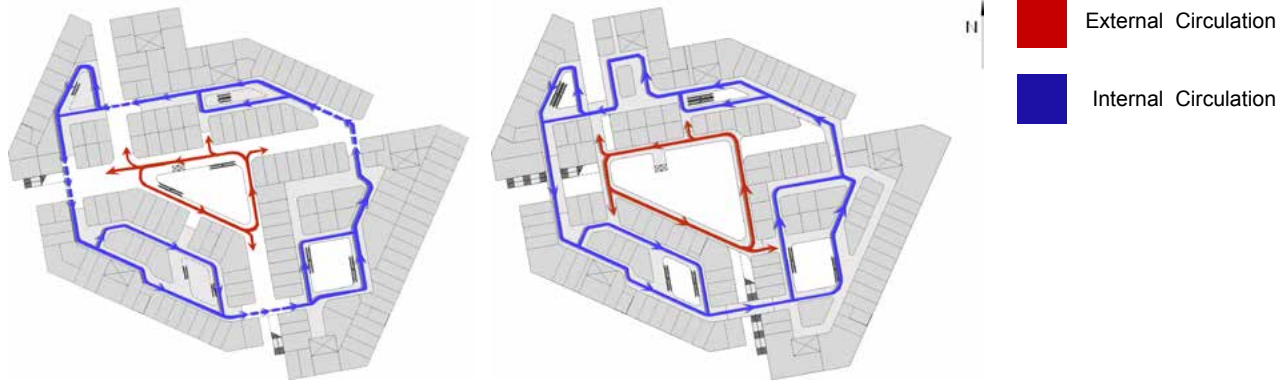
1st prize

Shopping Mall & Residential Towers

May 2013

Currently under construction

Role: Co-Design/Form Design & Research/Layout Design/Sustainability Analyst/3D Modeler (direct supervisor: Abdelkader Saadi)



Longjiang Mixed-Use Development, Foshan (HSArchitects)

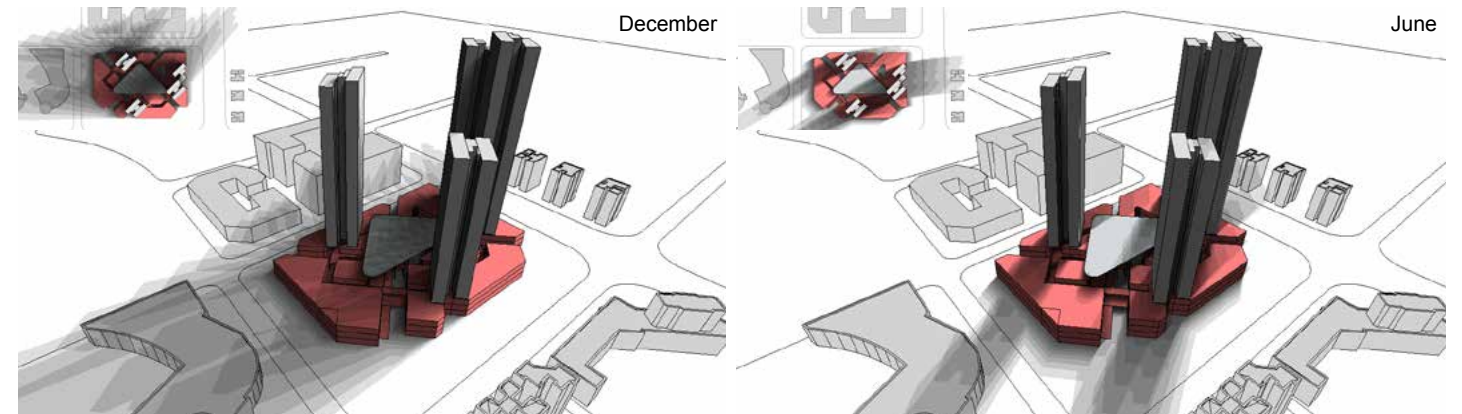
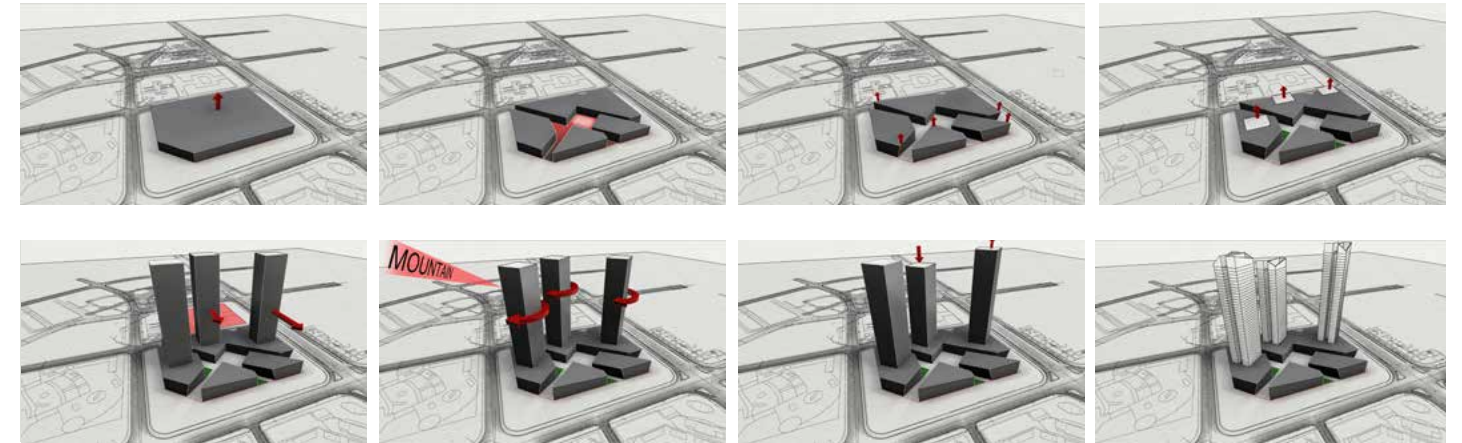
1st prize

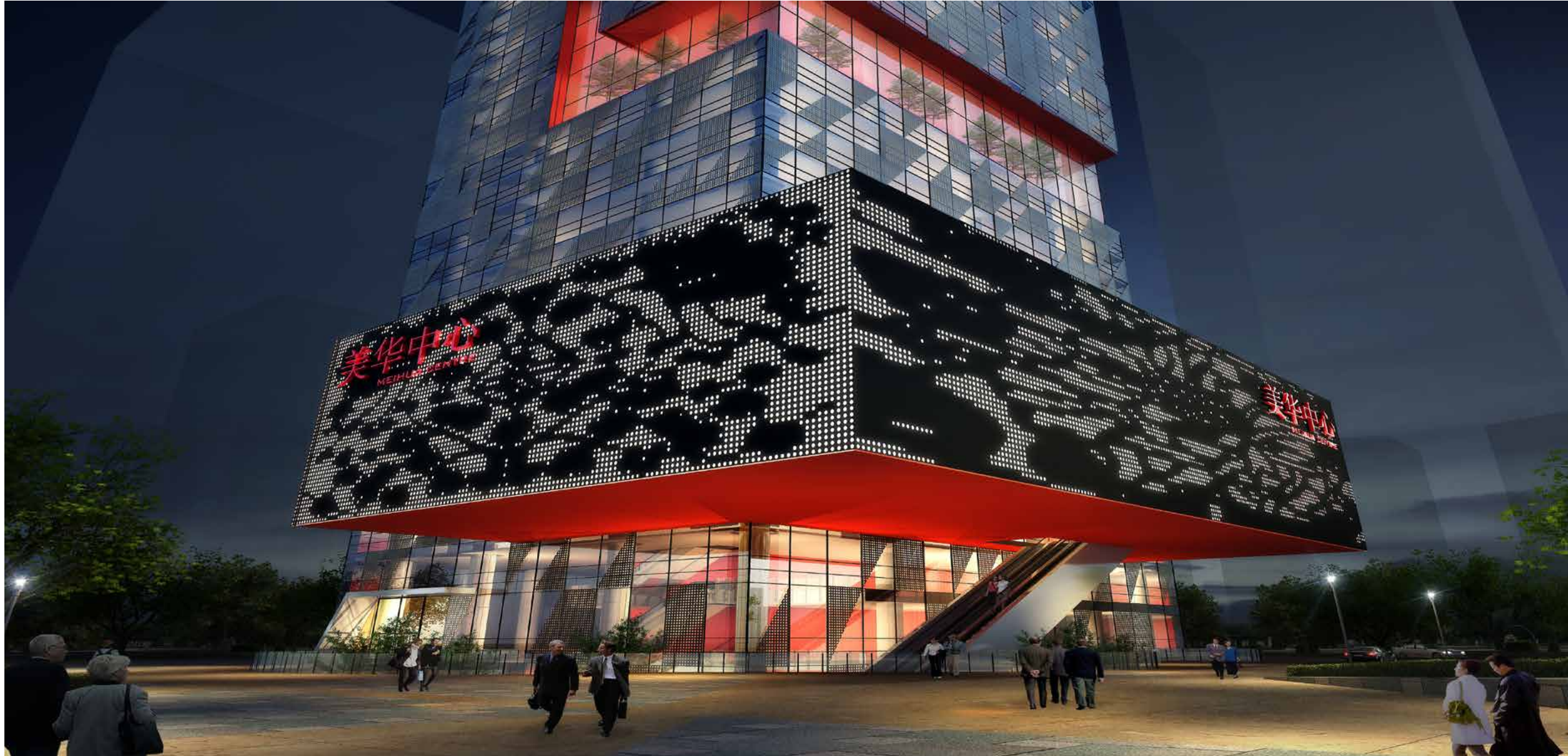
Shopping Mall & Residential Towers

May 2013

Currently under construction

Role: Co-Design/Form Design & Research/Layout Design/Sustainability Analyst/3D Modeler (direct supervisor: Abdelkader Saadi)





Meihua Center, Foshan (HSArchitects)

2nd prize

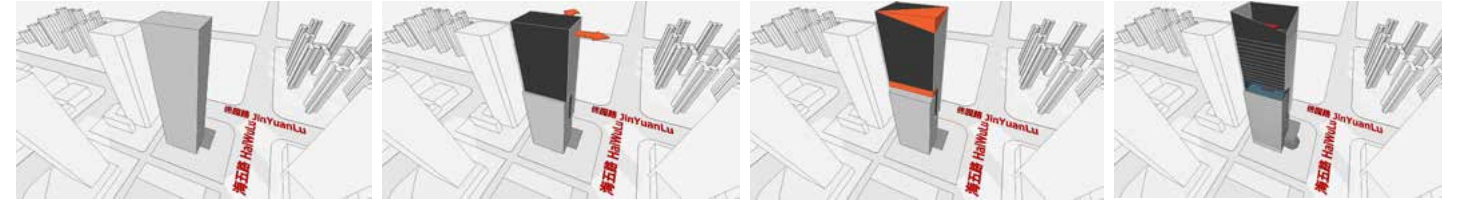
Shopping Mall & Office Building

November 2012

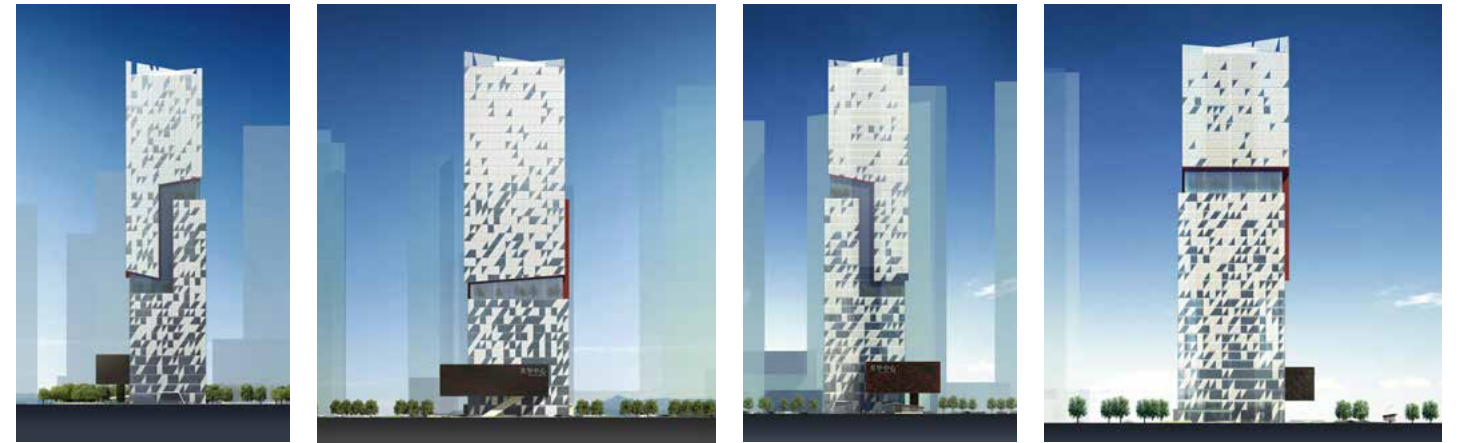
Role: Form & Layout Design/Landscape Design/Sustainability Analyst/Presentation Design (direct supervisor: Abdelkader Saadi)

The site is located in the heart of the southern City of Foshan, the birth place of Kung FU, which has been a strong character that has defined this city.

The idea is based on the martial arts symbol (Yin Yan), which is represented by two elements joining together and forming perfect balance and stability. The volume of the tower is therefore divided in two interlocking elements strongly expressed in both volume and façade which gives the tower a unique form that will then be clad in two layers of glass and perforated aluminium panels, forming an exciting dynamic pattern.



Mass Study



Elevations

Meihua Center, Foshan (HSArchitects)

2nd prize

Shopping Mall & Office Building

November 2012

Role: Form & Layout Design/Landscape Design/Sustainability Analyst/Presentation Design (direct supervisor: Abdelkader Saadi)



2F



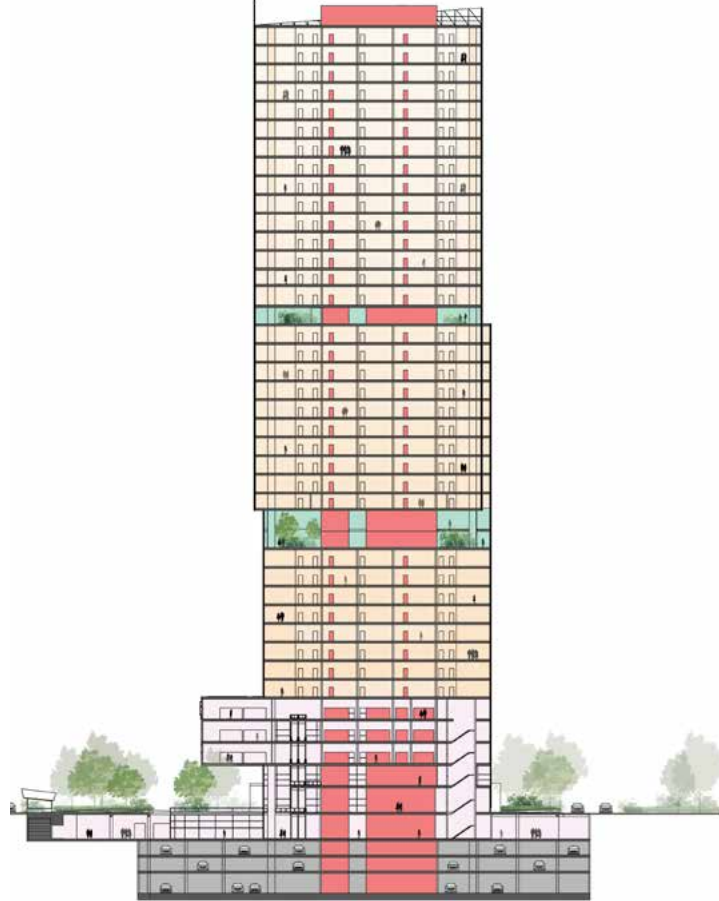
3F



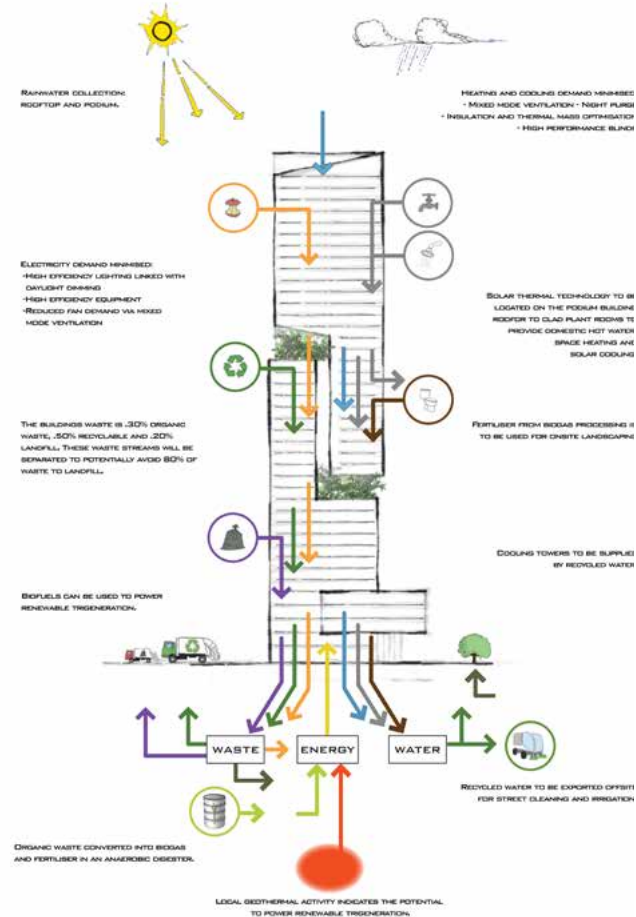
14F



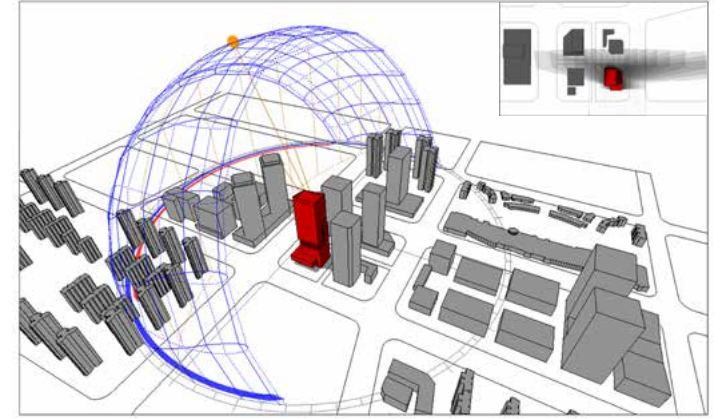
16-25F



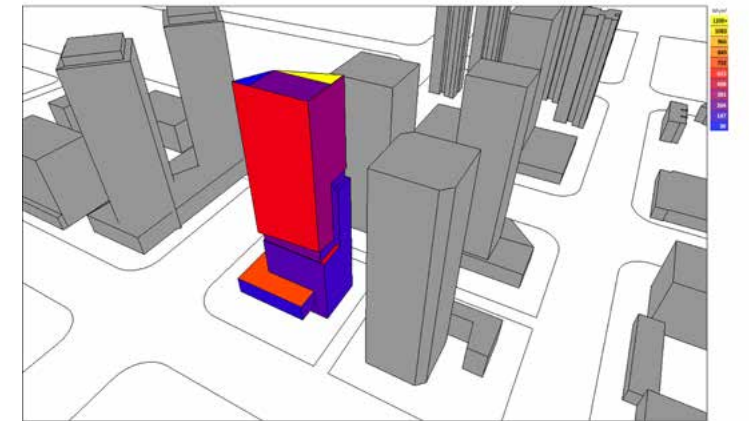
Section



Water Waste Management



Shadow Range Analysis



Solar Radiation Analysis

Meihua Center, Foshan (HSArchitects)

2nd prize

Shopping Mall & Office Building

November 2012

Role: Form & Layout Design/Landscape Design/Sustainability Analyst/Presentation Design (direct supervisor: Abdelkader Saadi)



Bo Ao Airport, Hainan (HSArchitects)

2nd prize

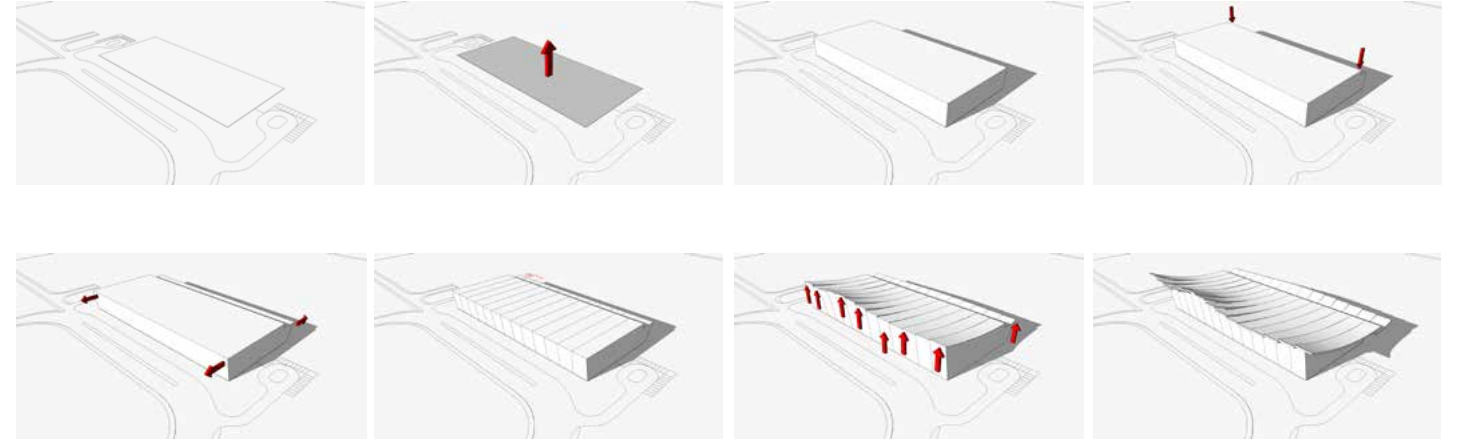
Airport

December 2012

Role: Co-Design/Form Design/Landscape Design/Presentation Design/Sustainability Analyst (direct supervisor: Abdelkader Saadi)

Airports are gates to the cities. The first encounter with the city one experiences is on its airport. Having that in mind, the initial question was: what is Hainan?

Hainan environment is characterized by the beautiful blue sea, green tropical trees, breeze. The concept aims to link the design to its surrounding. The main element of the design is the striking shape of the roof that takes inspiration from the tropical trees and its leafs. The idea nurtures and reestablishes new relationship between man and nature.



Mass Study



Form Research

Bo Ao Airport, Hainan (HSArchitects)

2nd prize

Airport

December 2012

Role: Co-Design/Form Design/Landscape Design/Presentation Design/Sustainability Analyst (direct supervisor: Abdelkader Saadi)

空侧 AIRSIDE



与二期的连廊系统
CONNECTION LINK WITH PHASE 2

陆侧 LANDSIDE

General Layout Composition Diagram

Departure



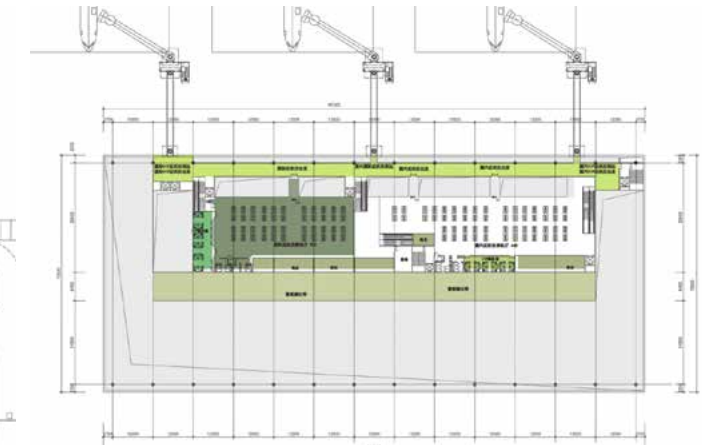
Arrival



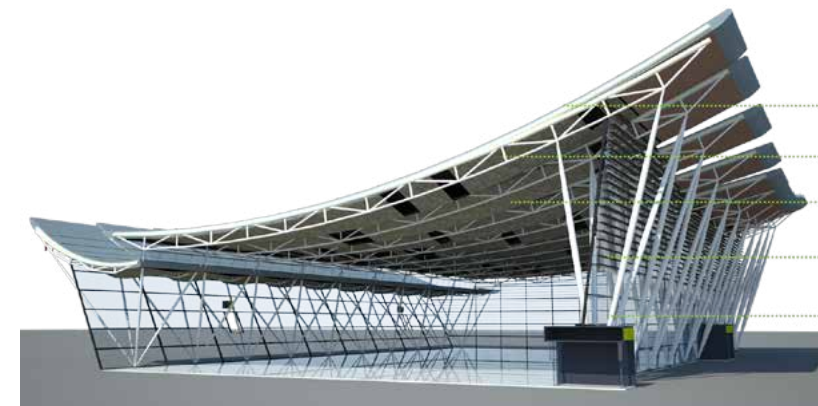
Vertical Composition Diagram



GF



1F



Roof Structure Design

- Aluminium Light-Weight Roof Cladding
- Steel Truss
- Timber Ceiling
- Louvres
- Steel Columns

Bo Ao Airport, Hainan (HSArchitects)

2nd prize

Airport

December 2012

Role: Co-Design/Form Design/Landscape Design/Presentation Design/Sustainability Analyst (direct supervisor: Abdelkader Saadi)



Located on the Pearl River in Guangzhou, this hotel has an important role to reflect the beauty of the city, and to be its landmark.

Closeness to the river defined the idea of the building: to manifest fluid movement, liquidity and transparency. The shape itself is organic, consisting of slabs that are gradually narrowing: rice terraces-like. The atrium has been set to be “The Water” of the building, unconstrained in form, giving the impression of a flow into slabs, sparkling under the sun rays. “The Water” connects “Rice Terraces”, making the shape balanced and graceful, being a true landmark on Pearl River.

Zhoutouzui Development, Guangzhou (HSArchitects)

1st prize

Hotel

May 2011 - June 2013

Phase 1 completed, Phase 2 in progress

Role: Team Leader/Form Design & Research/Layout Design & Development/Team Coordinator (direct supervisor: Shi Guang De)



Elevations



Zhoutouzui Development, Guangzhou (HSArchitects)

1st prize

Hotel

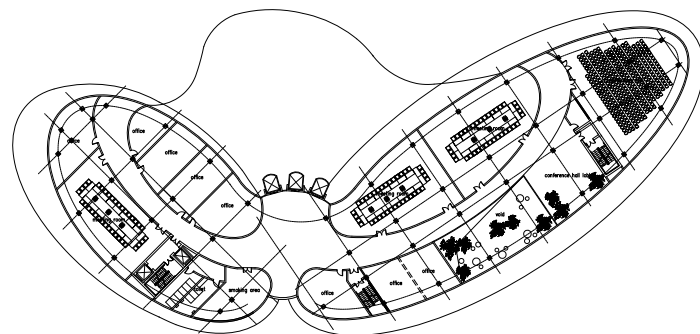
May 2011 - June 2013

Phase 1 completed, Phase 2 in progress

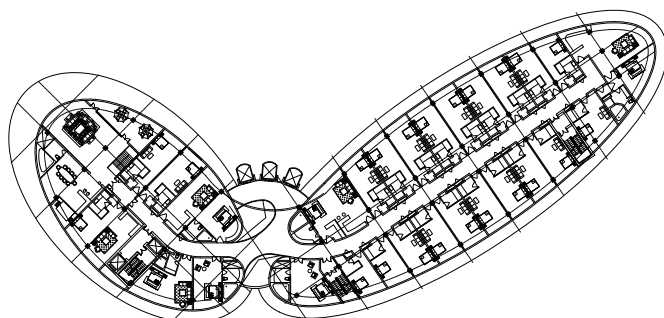
Role: Team Leader/Form Design & Research/Layout Design & Development/Team Coordinator (direct supervisor: Shi Guang De)



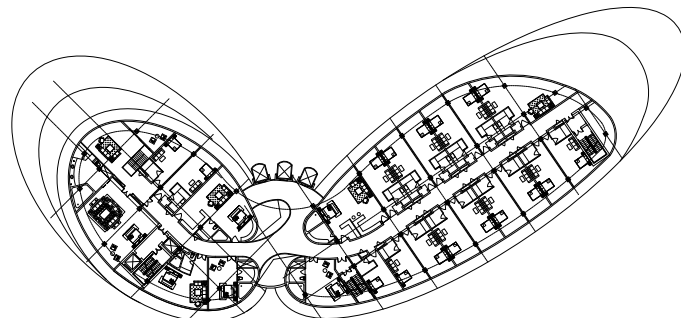
GF



4F



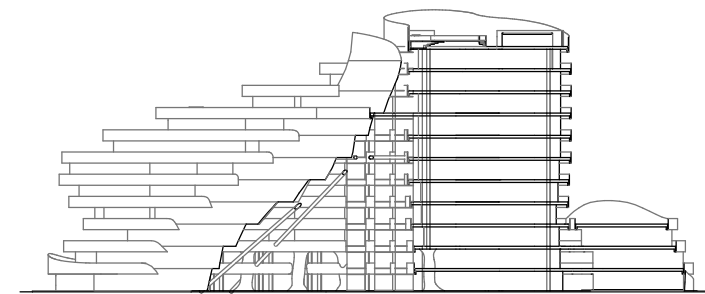
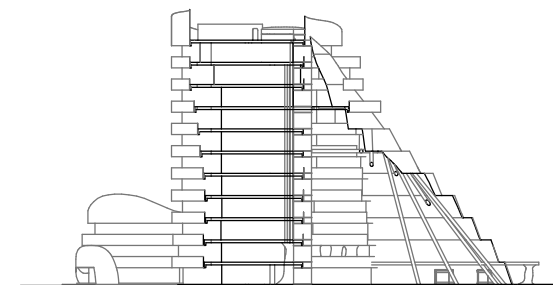
6F



9F



Masterplan



Sections

Zhoutouzui Development, Guangzhou (HSArchitects)

1st prize

Hotel

May 2011 - June 2013

Phase 1 completed, Phase 2 in progress

Role: Team Leader/Form Design & Research/Layout Design & Development/Team Coordinator (direct supervisor: Shi Guang De)



Juda Workers' Dormitory & Canteen, Pazhou (HSArchitects)

1st prize

Residential Development

December 2011 - August 2012

Currently under construction

Role: Concept Design/Team Leader/Form Design/Layout Development/Team Coordinator (direct supervisor: Chen Lang)

The users are the factory workers, and this block would be their living place and retreat after a long working hours in the factory. Due to an intense space limitation, the concept focused on playfulness and joy. The idea was to search for a solution (in form, materials, function), in which comfort can be achieved, regardless of tight space.

The buildings have been organized as a set of boxes, joyfully shifted from its axes in different directions. This dynamic form, together with the surroundings, form pleasant, comfortable and safe ambient for its hard working inhabitants.



Mass Study



Sketches



GF



1F

Juda Workers' Dormitory & Canteen, Pazhou (HSArchitects)

1st prize

Residential Development

December 2011 - August 2012

Currently under construction

Role: Concept Design/Team Leader/Form Design/Layout Development/Team Coordinator (direct supervisor: Chen Lang)



Located in Xiangtan, Hunan province, this project became a unique research platform. Taking into account client's requirements to maximize used area and to allow future inhabitants necessary living comfort, this project required creative approach and re-thinking.

Due to a lack of space to completely fulfill inhabitants' outdoor needs, the landscape design embraced the vertical axes in its development. In that way, landscape started to develop upwards, in all 3 dimensions, fulfilling all the requirements and transforming typical residential tower into dynamic, interesting creation.

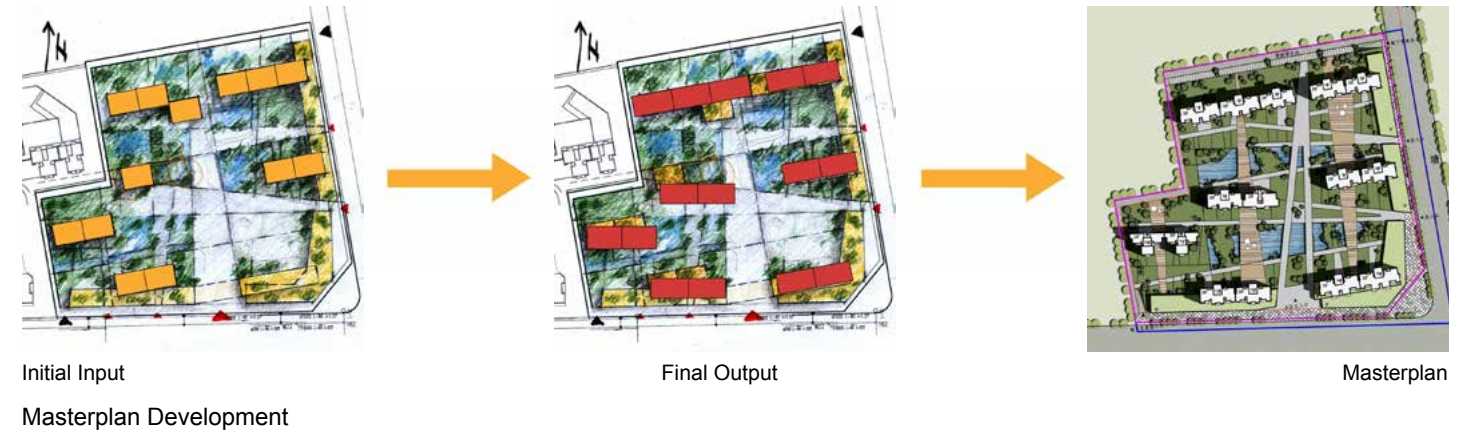
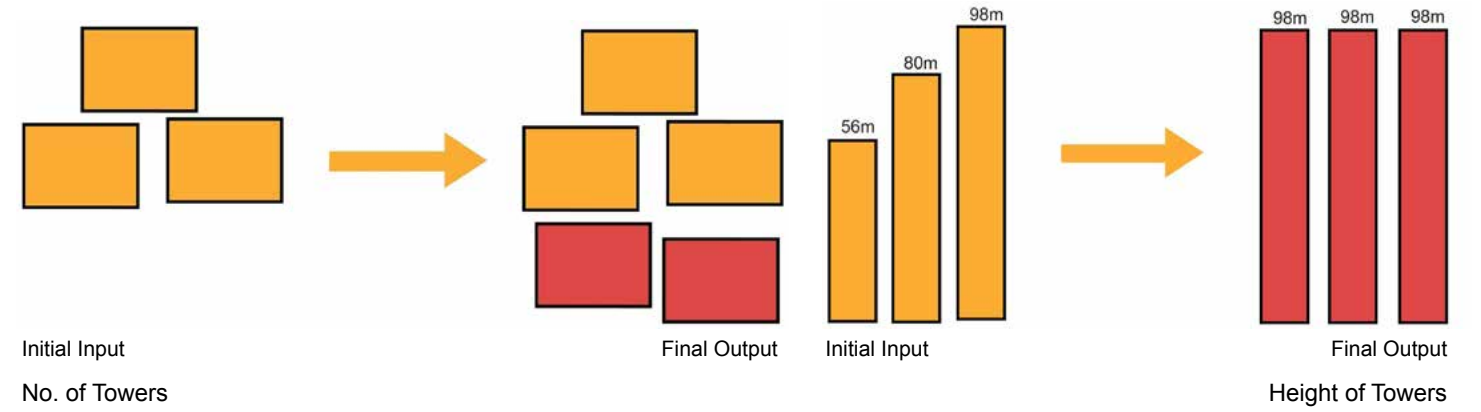
Xiangtan Residential Development. Xiangtan (HSArchitects)

2nd prize

Residential Development

July 2011

Role: Concept Design/Team Leader/Form Design/Team Coordinator/Landscape Design (direct supervisor: Shi Guang De)



Xiangtan Residential Development. Xiangtan (HSArchitects)

2nd prize

Residential Development

July 2011

Role: Concept Design/Team Leader/Form Design/Team Coordinator/Landscape Design (direct supervisor: Shi Guang De)



Main Entrance



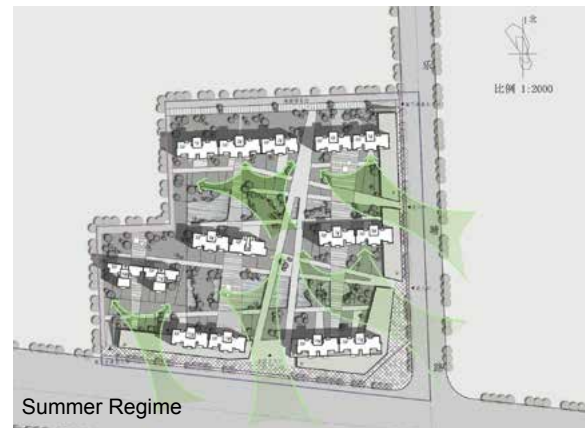
Side Entrances

Entrances



Winter Regime

Wind Analysis



Summer Regime

SAME OLD SAME OLD...



OR...



Xiangtan Residential Development. Xiangtan (HSArchitects)

2nd prize

Residential Development

July 2011

Role: Concept Design/Team Leader/Form Design/Team Coordinator/Landscape Design (direct supervisor: Shi Guang De)



Wave Bulding (Interdil)

Residential Building

December 2008 - April 2011

Completed

Role: Concept Design/Interior & Layout Development/Roof Garden Design/3D Modeler (direct supervisor: Miodrag Zivkovic)

Wave building is a 6-floor mixed-use facility. The ground level has been designed as office space. The rest of the building is used as residential housing and contains 11 luxurious apartments, all different in structure (from 2-bedroom to 5-bedroom apartments on highest levels). Taking into consideration individual needs and diversity of future owners, every apartment is carefully designed as a unique unit, allowing greater choice.

Building's rooftop, located above the 6th floor penthouse, is created as an eco-friendly roof garden and represents a unique natural retreat for its residential inhabitants.

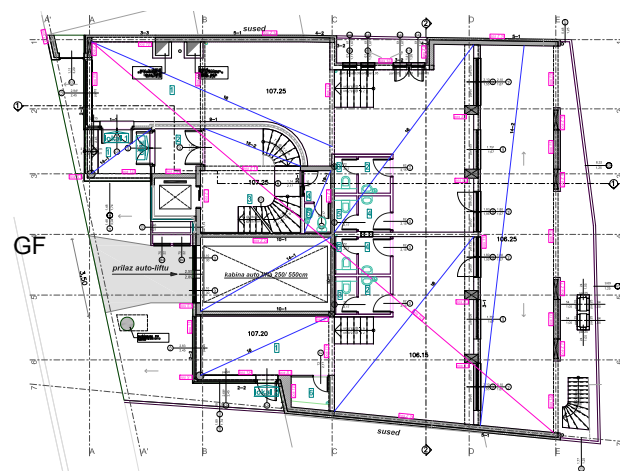


Apartments - Variations

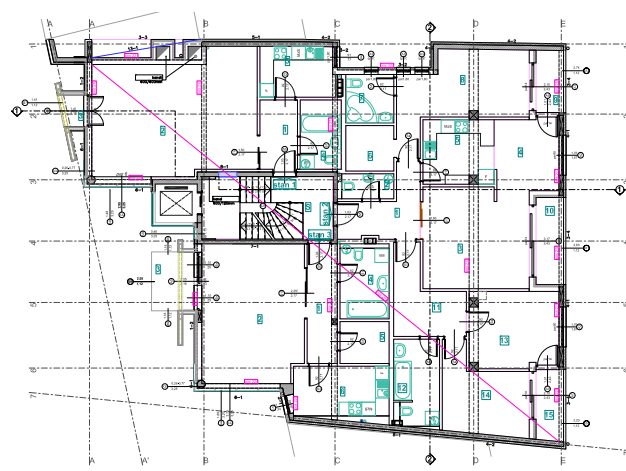


Apartments - Interior Design

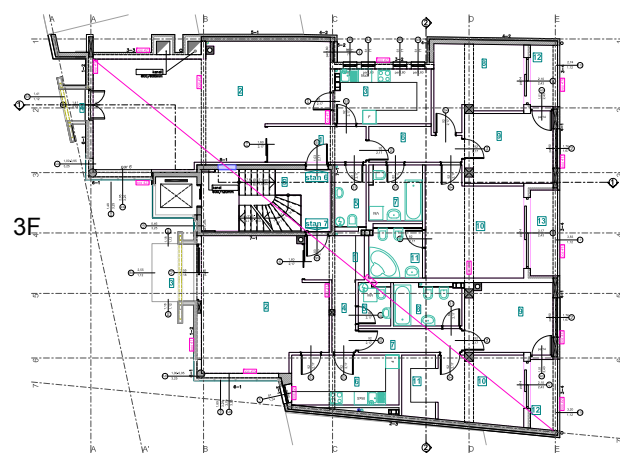
Wave Bulding (Interdil)
 Residential Building
 December 2008 - April 2011
 Completed
 Role: Concept Design/Interior & Layout Development/Roof Garden Design/3D Modeler (direct supervisor: Miodrag Zivkovic)



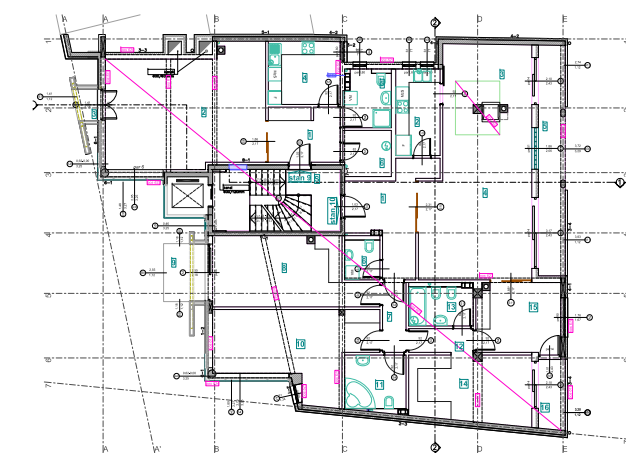
GF



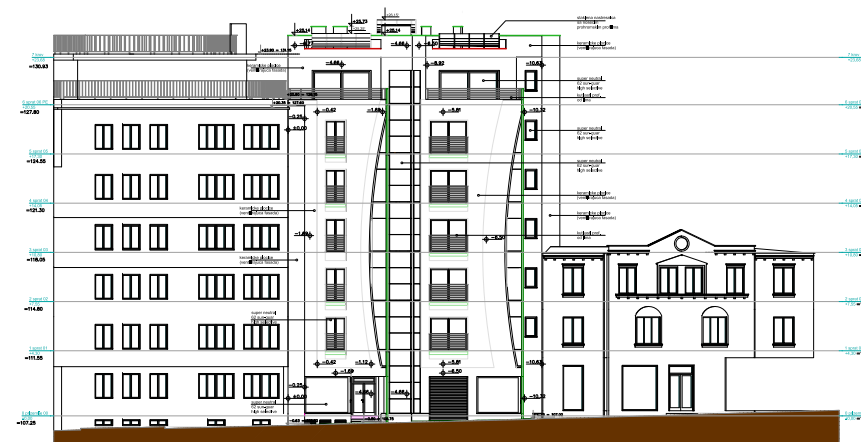
1F



3F



5F



Street Elevation



Side Elevations - North & South



Section

Wave Buiding (Interdil)
 Residential Building
 December 2008 - April 2011
 Completed
 Role: Concept Design/Interior & Layout Development/Roof Garden Design/3D Modeler (direct supervisor: Miodrag Zivkovic)



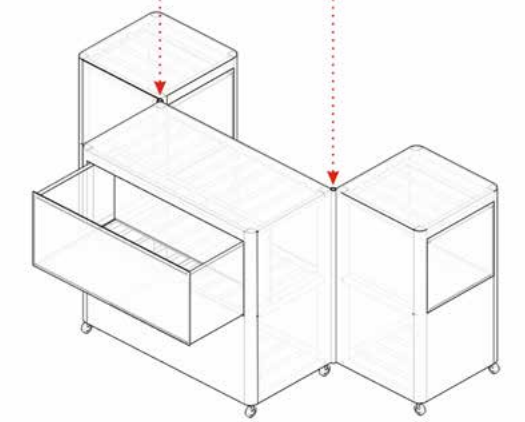
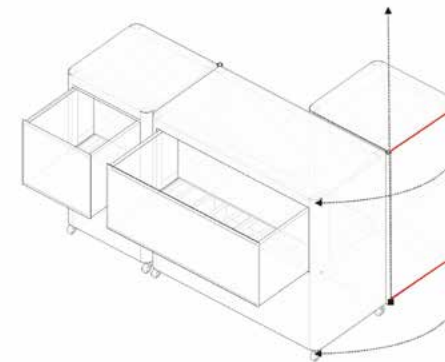
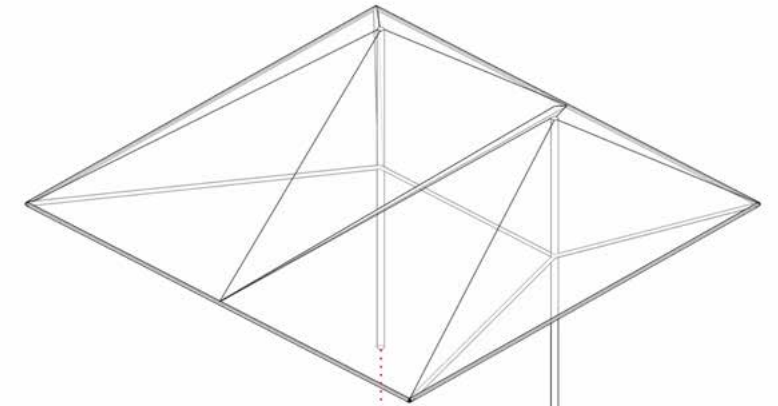
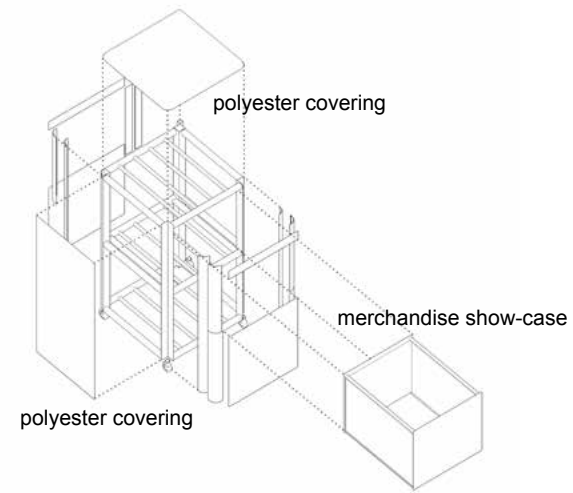
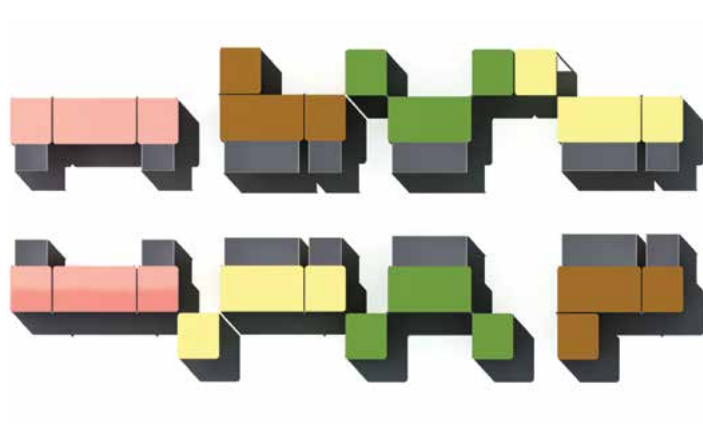
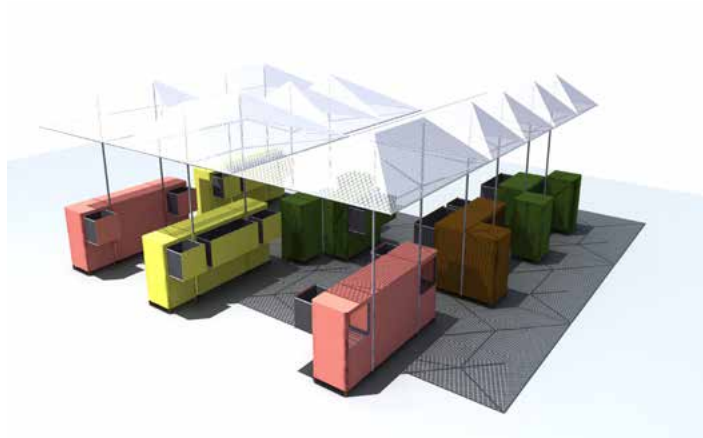
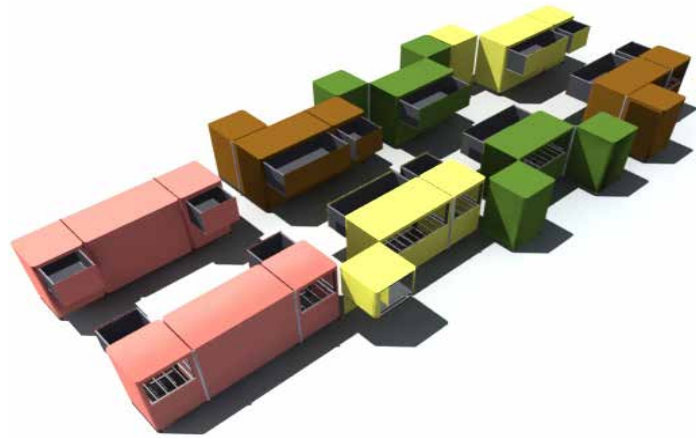
This concept, besides the idea of mobility, has joined the other key features of modern retail counter: flexibility and modularity. The basic unit of the counter consists of a main corpus and two lateral modules. These modules are connected to the link that enables them to rotate on a vertical axis. There are four possible individual combinations. Those variations allow the seller to choose the one that suits his merchandise the most. Thus, each vendor in the market has the ability to directly affect working environment. Market becomes “alive” spatial configuration. The buyer gets the chance to experience a new kind of market, interesting and dynamic.

Open Market Stall Design (Lidija Filipovska & Ivan Simic)

Product Design

June 2010

Role: Team Leader/Product Design & Analysis/Form Design & Research/Presentation Design/3D Modeler



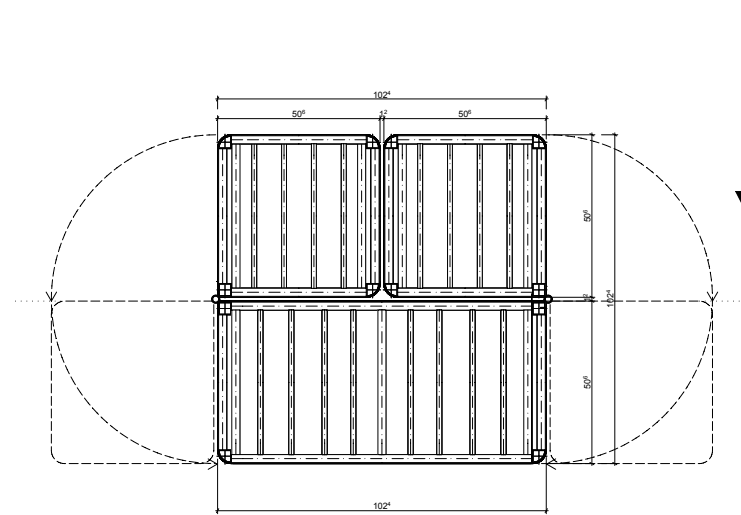
Customisation / Flexibility Analysis

Open Market Stall Design (Lidija Filipovska & Ivan Simic)

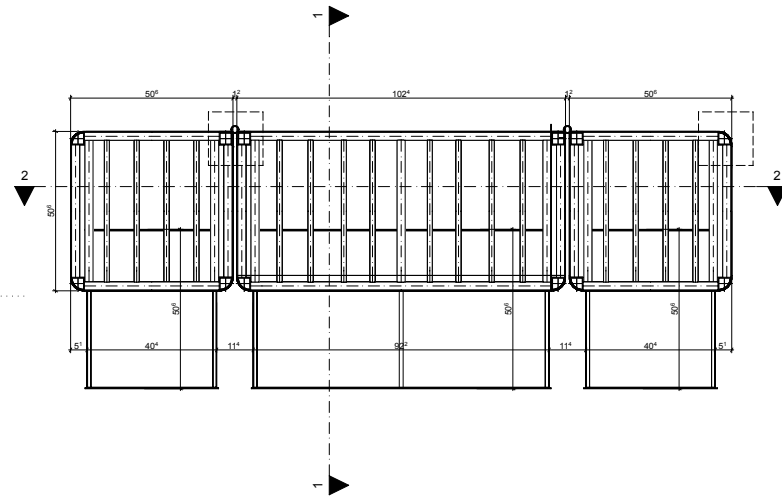
Product Design

June 2010

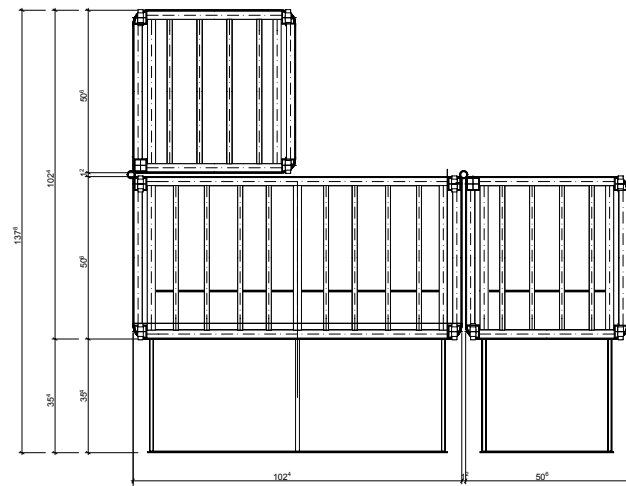
Role: Team Leader/Product Design & Analysis/Form Design & Research/Presentation Design/3D Modeler



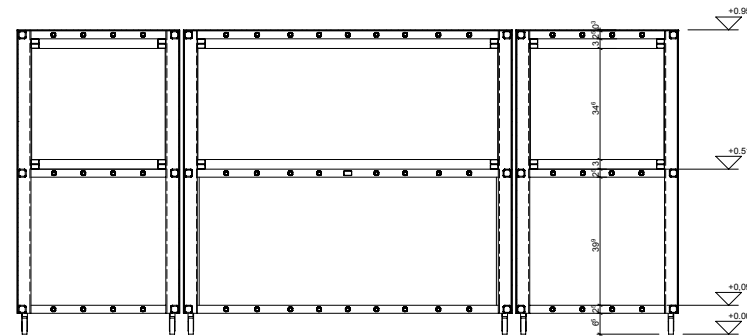
Top View - Folded



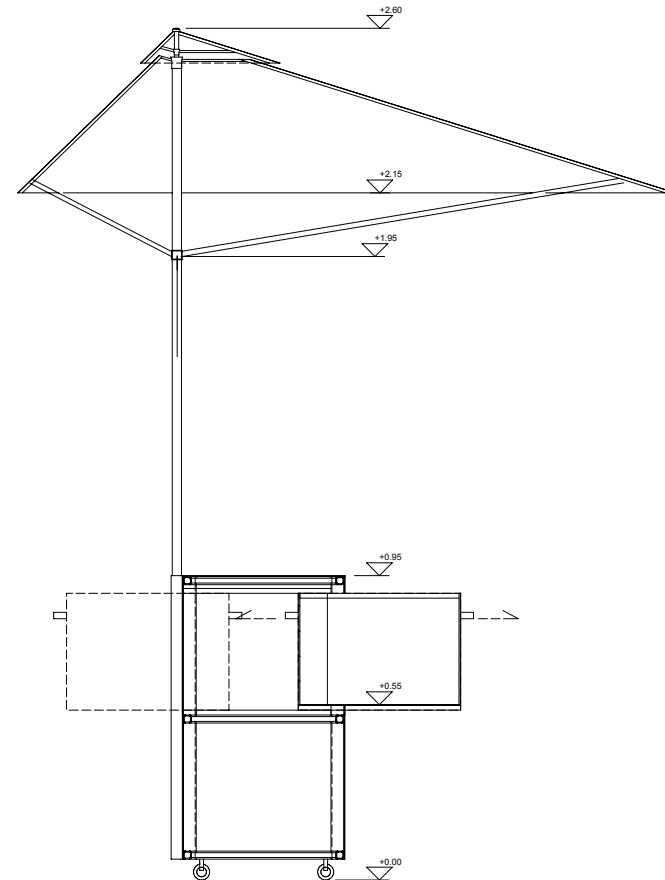
Top View - Unfolded



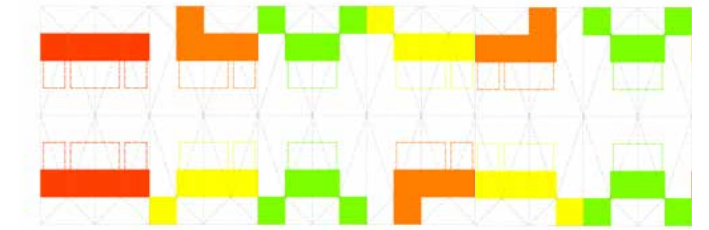
Top View - Variations



Section 2-2



Section 1-1



Flexibility Analysis - Variations

Open Market Stall Design (Lidija Filipovska & Ivan Simic)

Product Design

June 2010

Role: Team Leader/Product Design & Analysis/Form Design & Research/Presentation Design/3D Modeler

INDEX

Selected works 06-14



Guangdong Patent Center, PRC
HSArchitects
1st prize
Government Office Development
December 2012 / April 2013
Status: phase 2 in progress
Page 4-6



Meihua Center, Foshan, PRC
HSArchitects
2nd prize
Shopping Mall & Office Building
November 2012

Page 13-15



Juda Workers' Dormitory, PRC
HSArchitects
1st prize
Residential Development
December 2011-August 2012
Status: currently under construction
Page 22-23



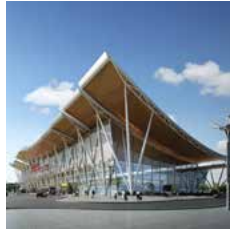
Wave Building, Belgrade, RS
Interdil
Residential Building
December 2008-April 2011
Status: completed

Page 27-29



Zengcheng Stadium, PRC
Coop Himmelb(l)au & HSArchitects
2nd prize
Sport Center
January 2013

Page 7-9



Bo Ao Airport, Hainan, PRC
HSArchitects
2nd prize
Airport
December 2012

Page 16-18



Xiangtan Development, PRC
HSArchitects
2nd prize
Residential Development
July 2011

Page 24-26



Open Market Stall Design, RS
Lidija Filipovska & Ivan Simic
Product Design
June 2010

Page 30-32



Longjiang Development, PRC
HSArchitects
1st prize
Shopping Mall & Residential Towers
May 2013
Status: currently under construction
Page 10-12



Zhoutouzui Development, PRC
HSArchitects
1st prize
Hotel
May 2011-June 2013
Status: phase 2 in progress
Page 19-21

CONTACT:

m: +31 62 710 44 84 (NL)
+381 64 110 46 13 (RS)

lidija@bass-e.nl / lidjidja@gmail.com

I am an architect, with eight years of international experience in spatial design, gained in China, Serbia and the Netherlands. As a designer in the international team, based in China, I participated on various awarded projects and competitions, (1st prized Guangdong Patent Center and Longjiang Development, 2nd prized Meihua Center and Zengcheng Stadium etc). Several projects I designed (as a leading designer), are currently under construction in China. Prior to my employment in China, I worked for several companies in Belgrade, providing concept and design development for various residential and mixed-use projects in Serbia and Montenegro. My design for “Project Belgrade: tranzicion:ism” was exhibited on X Venice Biennale of Architecture. Throughout my carrier, I developed myself from supporting chief designers to leading projects and coordinating assigned teams. My driving force lies in a strong desire to deepen my knowledge, broaden my horizons and challenge myself. This tendency enables me to constantly develop within my profession.